



DREAMING TREE

3DSVG.COM

PRODUCT DESIGNER/ ART DIRECTOR: RON GUTMAN
ARTIST: DIANA TAM

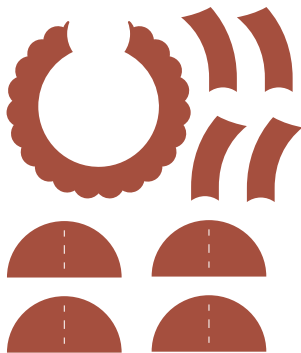
COPPER EVENING BAG



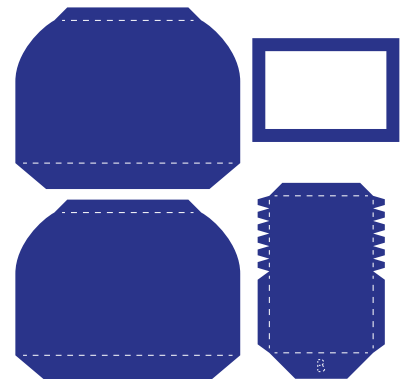
SUPPLIES NEEDED:

- 3 SHEETS OF 12X12 SAPPHIRE CARDSTOCK
- 1 SHEET OF 12X12 FLORAL PATTERN PAPER
- 1 SHEET OF 8.5X11 COPPER PATTERN FOIL PAPER
- 1 PAIR OF MAGNETS
(0.6 DIA X 0.08 THICKNESS - 15MMX2MM)
- MEDIUM TASSEL (2" IN HEIGHT)
- STRING
- HOT GLUE
- GLUE

4" WIDE
ELEMENTS_COPPER_FOIL.SVG



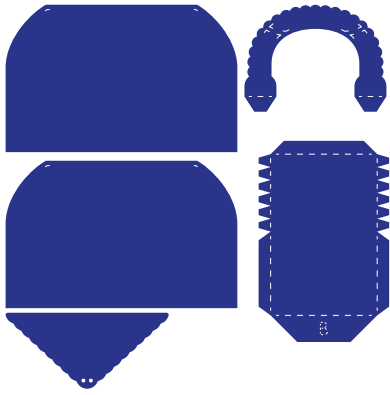
11.1" WIDE
MAIN_1_SAPPHIRE.SVG



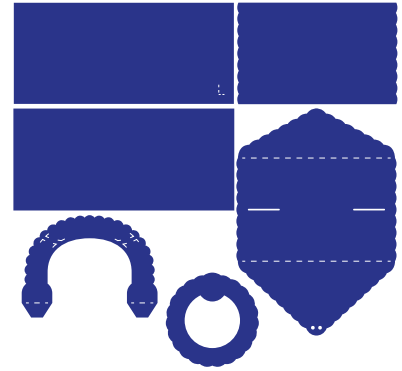
COPYRIGHT 2019 DREAMING TREE. FOR DETAILED HELP AND INSTRUCTIONS USING THESE FILES WITH YOUR CUTTING MACHINE AND/OR SOFTWARE, PLEASE VISIT WWW.3DSVG.COM/HELP - ASSEMBLY VIDEOS ARE LOCATED ON THIS PRODUCT'S PAGE AT WWW.3DSVG.COM



10.8" WIDE
MAIN_2_SAPPHIRE.SVG



11.3" WIDE
MAIN_3_SAPPHIRE.SVG



11.2" WIDE
PANELS_PATTERN.SVG



1.3" WIDE
MAGNET_COVER_SAPPHIRE.SVG

